



**PX82 Series
0.5 to 5.5 Vdc Output**

0-50 to 800 in H₂O
0-125 to 0-2,000 mbar
Differential Pressure

1 psi = 27.68 in-H₂O
1 bar = 14.5 psi
1 kg/cm² = 14.22 psi
1 Atmosphere = 14.7 psi = 29.93 in-Hg = 760.2 mm-Hg = 1.014 bar

- ☑ Inches of Water Differential at Line Pressure - up to 1500 psi
- ☑ FM and CSA Approved Intrinsically Safe
- ☑ Stainless Steel/Inconel Construction for Harsh Industrial Environments
- ☑ 5 Point Calibration Provided 0%, 50%, 100%, 50%, 0%

The OMEGADYNE™ PX82 Series wet-wet, differential pressure transducer can measure inches of water differential at line pressure up to 1500 psi. This high line pressure capacity, high operating temperature and excellent temperature compensation make the PX82 Series an extremely accurate and reliable transducer. FM and CSA approved Intrinsically Safe rating is standard. The rugged stainless steel and Inconel Diaphragms and Stainless Steel give the PX82 Series high reliability in harsh industrial environments.

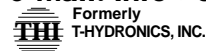
**For Sales and Service
In U.S.A. and Canada**

**1-800-872-3963SM
1-800-USA-DYNE**

International Customers Dial
(614) 965-9340
24-Hour FAX (614) 965-9438

OMEGADYNESM FAX
OMEGADYNE's 24-Hour
On-Line Publishing Service
**1-800-344-3963SM
1-800-DIG-DYNE**
Document # 3706

OMEGADYNE, Inc.
149 Stelzer Court, Sunbury, OH 43074
<http://www.omegadyne.com>
e-mail: info@omegadyne.com



© COPYRIGHT 1996 OMEGADYNE, INC. ALL RIGHTS RESERVED.



**SPEC SHEET
PX82-5V**

Interchangeable with
Model TH-D2V

\$950
Model Shown

**LOW RANGE
INDUSTRIAL
WET/WET
DIFFERENTIAL
PRESSURE
TRANSMITTER
with Amplified
Voltage Output**



Model PX82B0-100D5V
Shown Smaller Than Actual Size

► **Most Popular Models Highlighted** ◀ **Prices Shown in U.S. Dollars**

To Order: (Specify Model Number)			
Models with 5V Output			
Range (in-H ₂ O)	Model Number	Price	Compatible Meters
0-50	PX82B[*]-050WCD5V	\$950	INFS, INFCS
0-100	PX82B[*]-100WCD5V	950	INFS, INFCS
0-150	PX82B[*]-150WCD5V	950	INFS, INFCS
0-200	PX82B[*]-200WCD5V	950	INFS, INFCS
0-300	PX82B[*]-300WCD5V	950	INFS, INFCS
0-500	PX82B[*]-500WCD5V	950	INFS, INFCS
0-800	PX82B[*]-800WCD5V	950	INFS, INFCS
Range (psi)	Model Number	Price	Compatible Meters
0-2	PX82B[*]-002D5V	\$950	INFS, INFCS
0-3	PX82B[*]-003D5V	950	INFS, INFCS
0-4	PX82B[*]-004D5V	950	INFS, INFCS
0-5	PX82B[*]-005D5V	950	INFS, INFCS
0-6	PX82B[*]-006D5V	950	INFS, INFCS
0-8	PX82B[*]-007D5V	950	INFS, INFCS
0-10	PX82B[*]-010D5V	950	INFS, INFCS
0-15	PX82B[*]-015D5V	950	INFS, INFCS
0-18	PX82B[*]-018D5V	950	INFS, INFCS
0-22	PX82B[*]-022D5V	950	INFS, INFCS

Interchangeable with Model TH-D2V Metric Ranges Available - Consult Engineering
[*] Insert 0 for 10 ft cable or 1 for Bendix Connector

Extra Cable Length: Add suffix “-(length in feet)FT”, \$2/ft over standard 10ft (3m) length.
Ordering Examples: 1.) PX82B0-300WCD5V is a 300 in-H₂O differential pressure transducer with a 0.5-5.5 Vdc output and 10 ft (3m) shielded PVC cable, \$950.
2.) PX82B0-010D5V-25FT is a 10 psi differential pressure transducer with a 0.5-5.5 Vdc output and 25 ft (8m) shielded PVC cable, \$950+30=\$980.

Printed On Recycled Paper

LOW RANGE WET/WET DIFFERENTIAL PRESSURE TRANSMITTER

SPECIFICATIONS: 0.5-5.5 Vdc Output Electrical:

Excitation: 10-35 Vdc

Output: 0.5 to 5.5 Vdc

Zero Balance: 0.5V ±2% adj

Performance:

Accuracy Class: 0.25% Linearity, Hysteresis and Repeatability Combined

Agency Approvals: FM/CSA Intrinsically Safe IS/I.II.III/1/CDEFG Standard

Environmental:

Operational Temp Range: -34 to +107°C (-30 to +225°F)

Compensated Temp Range: -1 to +54°C (+30 to +130°F)

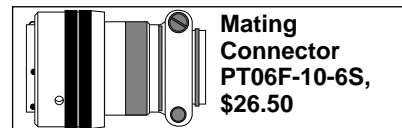
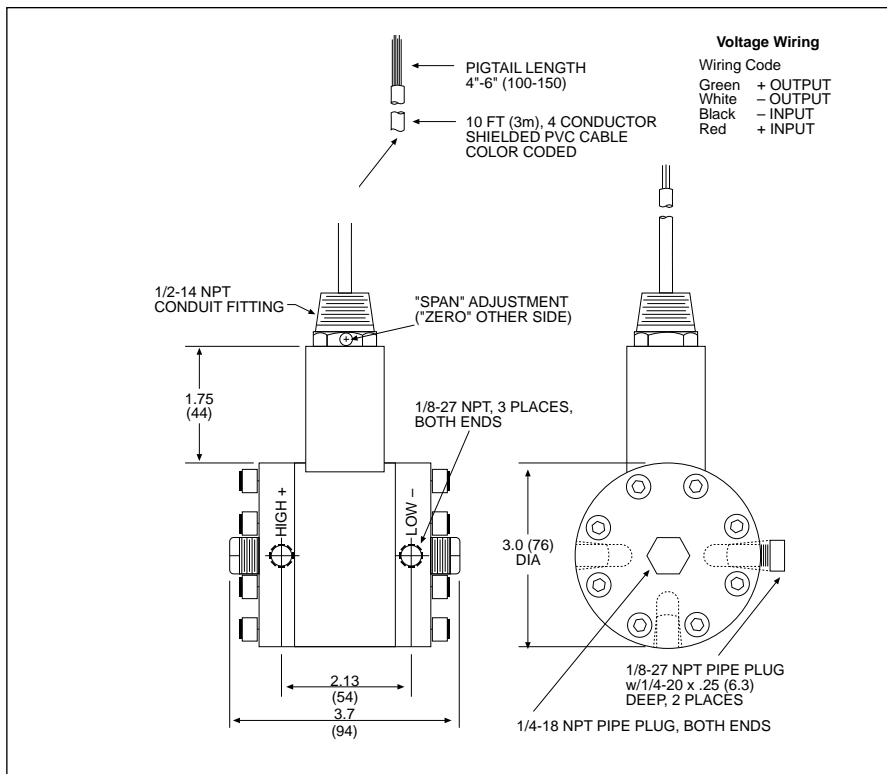
Pressure Effects:
Zero: <2% /1000 psi Line Pressure
Span: -2.45% /1000 psi Line Pressure

Thermal Effects:
Zero: ±0.50% FSO Maximum over compensated range
Span: ±0.50% Rdg maximum over compensated range

Pressure:
Ranges ± in-H₂O: 50, 100, 150, 200, 300, 500, 800
Line Operating Pressure: 1500 psi
Safe Overpressure: 1000 psi each side
Burst Pressure: 2500 psi minimum

Mechanical:
Wetted Parts: 17-4 PH Stainless Steel and Inconel 625
Pressure Port: 1/8-27 NPTF
Electrical Connection: 10 ft (3m) 4-conductor Shielded PVC Cable
Optional: PT1H-10-9P (or equal) Integral Connector
Mating Connector: PT06F-10-6F (not included)

CUSTOM CONFIGURATIONS:



SERIES	PRESSURE PORT	ELECTRICAL CONNECTION	RANGE CODE (in-H ₂ O)	UNITS	OUTPUT	OPTIONS
PX82	[1]	[2]	[3]	[4]	[5]	[6]
	B = 1/8-27 NPT-F (Standard)		050WC 100WC 150WC 200WC 300WC 500WC 800WC	D = differential pressure	V = mV/V Output \$795 5V = 0.5-5.5 Vdc \$950 I = 4-20 mA \$950	To Order a Custom Configuration: 1. Select a Pressure Port 2. Select Electrical Connection 3. Select a Pressure Range 4. Select Pressure Units 5. Select Output 6. Select Options and Agency Approvals
	0 = Shielded PVC Cable 4 ft (1.2m) mv/V models 10 ft (3m) on Amplified Models \$2/ft over standard length		002 003 004 005 006 008 010 015 018 022			
	1 = PT1H-10-6P Connector or equal (no charge). Mating Connector (not included) PT06F-10-6S, \$26.50			psi		
	5 = Lightning Protected Amplifier Housing (4-20 mA models only)					

Interchangeable with Model TH-D2V Metric Ranges Available - Consult Engineering
Extra Cable Length: Add suffix "-(length in feet)FT", \$2/ft over standard length (10 ft (3m) on 5V and 4-20 mA output; 4 ft (1.2m) on mV/V output)
Ordering Examples: 1.) PX82D0-500WC DI is a 500 inch of water pressure range model with 4-20 mA output and 10 ft (3m) PVC cable, \$950.
 2.) PX82D0-010DV-50FT is a 10 psi pressure range model with a mV/V output and 50 ft (15.2m) PVC cable \$795+92 = \$887
 3.) PX82D1-200WC DI is a 200 inch of water pressure range model with 4-20 mA output with an integral connector, \$950. Mating Connector (not included) PT06F-10-6S, \$26.50. 4.) PX82D1-800WC DI-FM is a 800 inch of water pressure range model with 4-20 mA output with an integral connector and FM Hazardous Location rating, \$950+150 = \$1100. Mating Connector (not included) PT06F-10-6S, \$26.50.

Look for OMEGADYNE Products on the World Wide Web!
<http://www.omegadyne.com>
 e-mail: info@omegadyne.com